

STS Multiplex ICP (AOE)**Tool Configuration :**

Item List	
Manufacturer:	STS
Model:	Multiplex ICP
Description:	Advanced Oxide Etch (AOE)
Wafer Size:	150~200mm
Vintage:	2000
Serial No:	18643
Tool Condition:	Used
Volts / HZ/Ph:	208 V 80A , 3Ph 60Hz
Remarks :	Semi-Auto Carousel

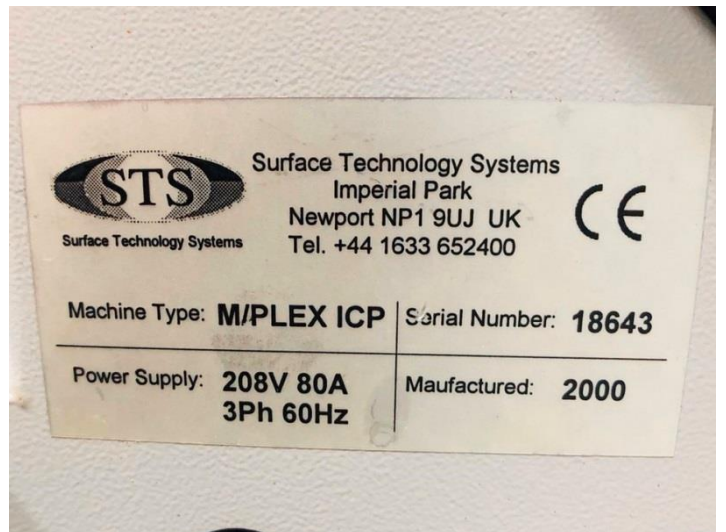
STS Multiplex ICP(AOE) :

- Coil RF generator and matching unit
- VAT Isolation valve
- Gas box
- Electronics Rack
- Pumping System –None
- RF Generators: ENI ACG10B 1kW (13.56MHz)
- Turbo Pump: None
- Clamp Type: Standard WTC
- Platen Type: Domed
- Carousel Vacuum Load lock
- MACs Robot: None

➤ Gases:

- CHF3
- CF4
- SF6
- O2

STS Multiplex ICP(AOE) Photos :



Other Photos :



PLATEN*3(AS306817-01/
AS307416-01-19543/
AS307416-01-ECS 1088)



ENI ACG-10B RF GENERATOR*1

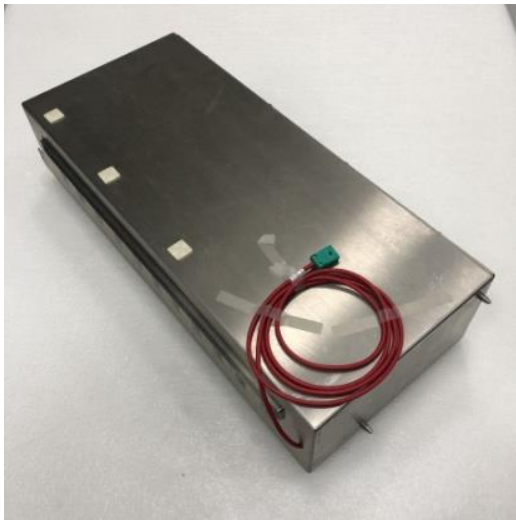


AST BRAVO LC 5200M*1



PLATEN 9412168.1*1

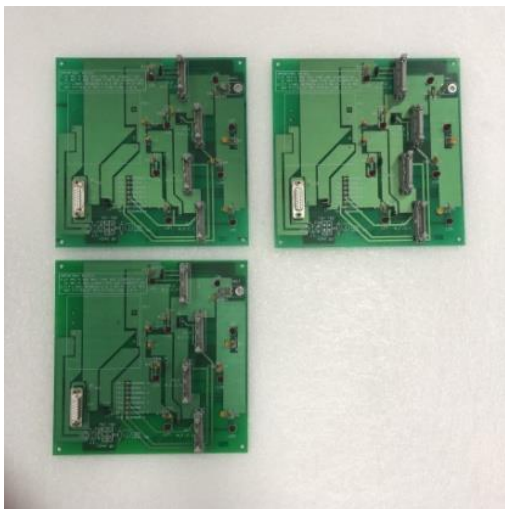
EQUIPMENT DATASHEET



Interface



AS303620*1



PB303570-01*3



Cable*62



C-Memory DS064041U84S240*1



Renesas Electronics CP82C55AZ*4